



MEDICAL

IT'S **REASSURING** WHEN  
YOUR MEDICATION ARRIVES  
SAFE AND SOUND.

Storopack – THE PROTECTIVE PACKAGING SPECIALIST	3
ADVICE AND SERVICE	4
Storopack PROCESS	6
CUSTOMIZED SOLUTIONS	7
SEGMENT SOLUTIONS	8
CLINICS, LABORATORIES, PHARMACIES AND HOMECARE ORGANIZATIONS - CL-SYSTEM	10
LOGISTICS - THERMO PALLET SHIPPER AND XXL PALLET SHIPPER	12
LOGISTICS - DRY ICE SHIPPER	14
PREQUALIFIED SYSTEM SOLUTIONS	16
STANDARD BOXES AND ACCESSORIES	20
STANDARD BOXES	22
COOLING ELEMENTS	23
SUSTAINABILITY	24

**1874** Founded as a tannery

**1959** Establishment of Storopack Hans Reichenecker GmbH + Co.; production of molded parts made of Styropor® (styrofoam)

As of: 2021



**70** locations

**564** million euros of revenue

**2,490** employees

## PERFECT PROTECTION MEANS BEING EQUIPPED FOR ANY SITUATION.

Storopack is a specialist in protective packaging. “Perfect Protective Packaging” is our promise to optimally protect every product while in transit. We think holistically, advising our customers on how to make the packaging process more efficient and, if desired, integrating tailored solutions. Our comprehensive range covers all of the requirements associated with optimal product protection. With 2,490 employees at certified production facilities and locations in 18 countries, we maintain a decentralized structure and are always in direct vicinity to our customers.

### OUR STRENGTHS – YOUR BENEFITS:

- ▶ OWNER-MANAGED FAMILY COMPANY
- ▶ LOCAL CONTACTS
- ▶ INTERNATIONAL FOCUS
- ▶ RELIABILITY
- ▶ SERVICE AND CUSTOMIZED ADVICE
- ▶ CUSTOMIZED SOLUTIONS
- ▶ OFF-THE-SHELF SOLUTIONS
- ▶ QUALIFICATION OF SOLUTIONS
- ▶ WIDE RANGE OF ACCESSORIES

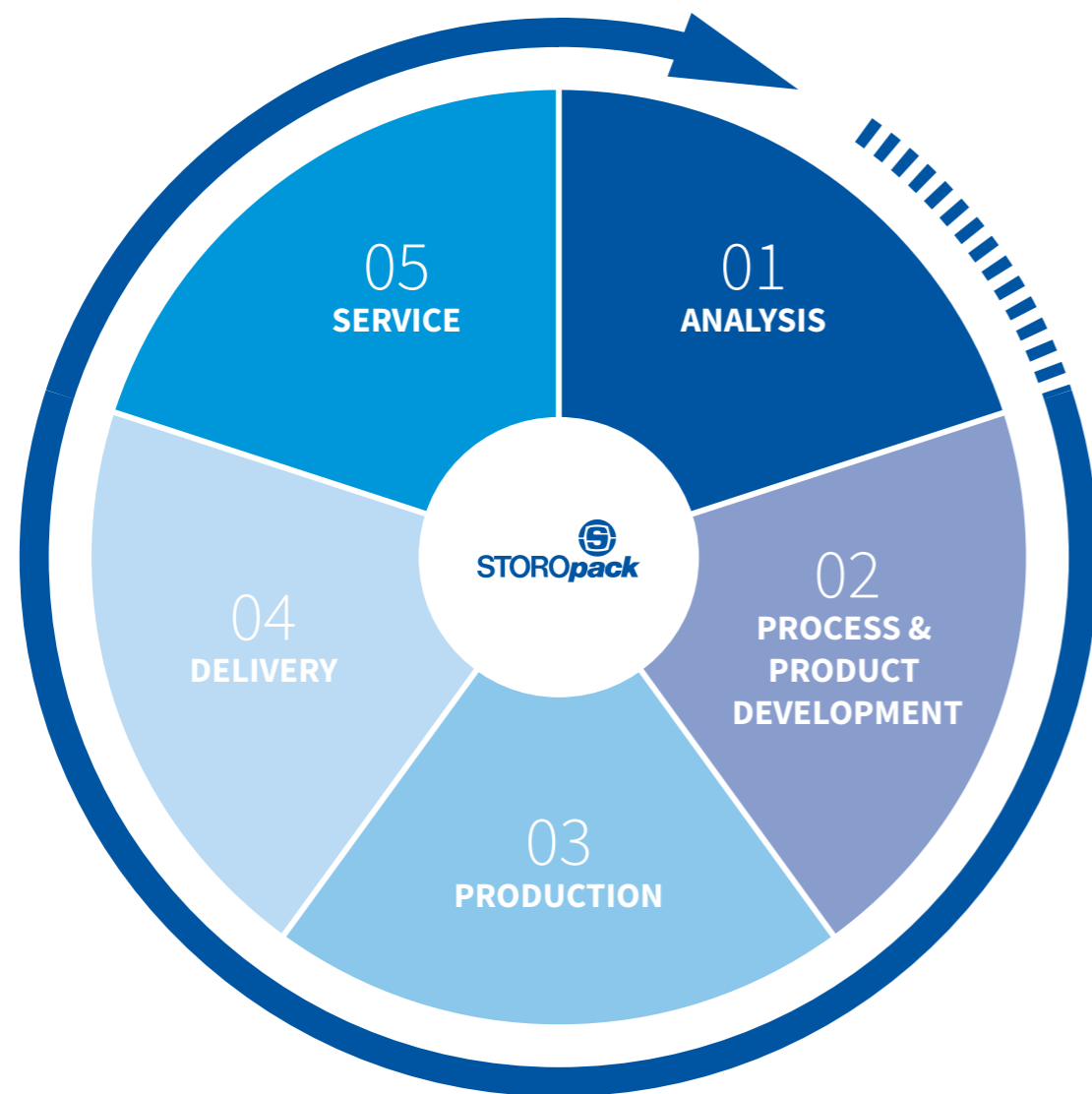
▶ **Storopack image film:** [www.storopack.com/perfect-protective-packaging](http://www.storopack.com/perfect-protective-packaging)



# A

ADVICE AND SERVICE

**SERVICE** MEANS  
FOCUSING ON CUSTOMER  
REQUIREMENTS.



**A PERFECT FIT MEANS SOLUTIONS TAILORED SPECIFICALLY TO CUSTOMER NEEDS.**

Storopack's range of individual solutions includes thermoboxes customized to meet your specific requirements. With our many years of experience and development expertise, we know that individual solutions are sometimes simply better.

customized solution just for you. With technical expertise, in-depth product knowledge, and specialist know-how across industries, we can help you develop temperature-controlled protective packaging. Using modern software and working closely with our customers, our packaging specialists develop the thermal packaging you need, whether it's single-use or reusable solutions, for the transport of fresh food or medicine.

This is why we set great store by the ability to listen to your needs and analyze them extensively. To find your perfect fit, we can either use components from our comprehensive portfolio for this or develop a new,

**OUR SERVICES**

- ▶ SUPPLY CHAIN ANALYSIS
- ▶ ANALYSIS OF REQUIRED PERFORMANCE AND DETERMINATION OF COMPONENTS
- ▶ CAD DEVELOPMENT
- ▶ ENVIRONMENTAL CHAMBER TESTING WITH TEMPERATURE SIMULATION
- ▶ PROTOTYPE CONSTRUCTION
- ▶ PROTOTYPE CENTER WITH CNC MILLING MACHINE
- ▶ TESTING LAB WITH DROP TEST SYSTEM
- ▶ QUALIFICATION

**GOOD CONSULTING MEANS DEVELOPING TAILORED SOLUTIONS.**

Five steps to optimal protective packaging and ergonomic procedures – in the Storopack process, we combine comprehensive consulting, technical expertise, and innovation in order to develop the right solution for you: we analyze the existing packaging and production processes and the current cost situation. On this basis, we select protective packaging which can be integrated into your processes with ease. We can either use components

from our comprehensive portfolio for this or develop a new, customized solution just for you. Thanks to our network of locations around the world, we manufacture in close proximity to you, deliver just in time, and are personally available at all times to assist you with our technical know-how.



**Customized design:**

Solutions for temperature-controlled transport of diagnostic products



SEGMENT SOLUTIONS

**DIVERSITY** IS OFFERING  
FLEXIBLE PROTECTION FOR  
EACH ITEM.

# CLINICS, LABORATORIES, PHARMACIES AND HOMECARE ORGANIZATIONS

## IT'S SECURE WHEN TEMPERATURE-SENSITIVE ITEMS ARRIVE AT THE APPROPRIATE TEMPERATURE.

Important medicines, vaccines, parenterals or medical samples have to be shipped or distributed uncompromised often in a short period of time. The challenge: the products are often temperature sensitive, and the temperature conditions along the way dependent on the time of year and distance.

That's where Storopack's CL-System comes in: the solution ensures that temperature-sensitive medications reach their destination at the appropriate temperature and optimally protected. Made of durable EPP, the box is particularly robust and ideal for returnable shipping for local or nationwide distribution.

▶ **Video:** [www.storopack.com/slk-clinics-heilbronn-video](http://www.storopack.com/slk-clinics-heilbronn-video)

### TECHNICAL SPECIFICATIONS CL-SYSTEM

	5l			10l			24l		
External dimensions in mm	392 x 335 x 325			417 x 385 x 370			697 x 385 x 370		
Loading capacity in mm	170 x 170 x 180			210 x 210 x 229			490 x 210 x 229		
Payload in l	5			10			24		
Temperature range	-15 °C	2-8 °C	15-25 °C	-15 °C	2-8 °C	15-25 °C	-15 °C	2-8 °C	15-25 °C
Duration in hours	> 25	> 24	> 24	> 24	> 24	> 48	> 22	> 24	> 48

QUALIFIED AT TEMPERATURES BETWEEN MIN. 22°C - MAX. 40°C; AVERAGE TEMPERATURE: 26°C\*



Designed for frequent use with local and nationwide distribution:: The CL-System can be reused well over 200 times.

\* Summer profile

### BENEFITS OF THE CL-SYSTEM

- ▶ JUST THE RIGHT TEMPERATURE: OPTIMAL TEMPERATURE RANGE THANKS TO PCM ACCUMULATORS AND ONE PACK-OUT FOR ALL SEASONS
- ▶ SAFE: BOXES CLOSE UP TIGHTLY AND FEATURE ADDITIONAL SEALING
- ▶ QUALIFIED: BASED ON AFNOR NF S99-700
- ▶ ROBUST: EPP BOXES CAN BE USED REPEATEDLY WELL OVER 200 TIMES
- ▶ CLEAN: THE MATERIAL CAN BE EFFECTIVELY DISINFECTED
- ▶ COST-EFFECTIVE: REPEATED USE REDUCES COSTS AND CONSERVES RESOURCES
- ▶ SIMPLE: ALL SYSTEM COMPONENTS CAN BE REORDERED INDIVIDUALLY, THUS AVOIDING COSTS AND PROTECTING THE ENVIRONMENT
- ▶ PRACTICAL: ORDERS CAN BE COMMISSIONED DIRECTLY INTO THE LINER AND PREPARED IN ADVANCE, E.G. THE DAY BEFORE SHIPPING
- ▶ USER-FRIENDLY: A HANDLE FOR THE 5L AND 10L BOX AS WELL AS A BELT FOR THE 24L BOX MAKES CARRYING COMFORTABLE



Practical for pre-picking: CL-System with liner

MEDICAL BROCHURE

## IT'S REASSURING WHEN TEMPERATURE-SENSITIVE GOODS ARRIVE SAFELY BY THE PALLET LOAD.

Safely shipping temperature-sensitive products is now easy thanks to prequalified solutions from Storopack. With our passively temperature-regulated pallet shippers, entire Euro pallets can be effortlessly transported in a temperature-controlled manner.

Customers can choose between our thermo pallet shipper in Neopor® for placing on a Euro pallet (for a temperature range of 15 to 25°C) and our XXL pallet shipper in XPS for

a temperature range of 2 to 25°C, with the latter able to hold an entire packed Euro pallet.

Both versions are able to keep the temperature stable for an exceptionally long period of at least 120 hours. They also boast outstanding ease of use and flexibility; the XXL pallet shipper, for instance, can be assembled by just one person within a few minutes. With Storopack pallet shippers, you have exactly what you need to ship temperature-sensitive products around the world.

## THERMO PALLET SHIPPER

### BENEFITS OF THE THERMO PALLET SHIPPER

- ▶ FAST: EASY ASSEMBLY IN JUST 10 MINUTES
- ▶ INCLUDES HIGH-INSULATING PANELS (HIPS) AND PCM TECHNOLOGY, ONLY 12 COOLING ELEMENTS REQUIRED
- ▶ PAYLOAD CONTAINER WITH LOADING HATCH FOR THE PRODUCTS
- ▶ SIMPLE: YEAR-ROUND PACKOUT



### THERMO PALLET SHIPPER TECHNICAL SPECIFICATIONS

Outer dimensions in mm	1200 × 800 × 1050
Payload capacity in mm	926 × 516 × 782
Payload in l	373,7
Volume weight in kg	168
Duration in hours	120
Temperature range	15–25°C

QUALIFIED AT TEMPERATURES BETWEEN MIN. 22°C – MAX. 40°C; AVERAGE TEMPERATURE: 26°C\*

## XXL PALLET SHIPPER

### BENEFITS OF THE XXL PALLET SHIPPER

- ▶ JUST THE RIGHT TEMPERATURE: SAFE COMPLIANCE WITH THE PRESCRIBED TEMPERATURE RANGE THANKS TO PCM COOLING ELEMENTS, EVEN WITH EXTREME OUTDOOR TEMPERATURE OF -20°C AND +60°C
- ▶ LIGHTNING-FAST: ASSEMBLY BY JUST ONE PERSON IN LESS THAN 10 MINUTES
- ▶ SIMPLE: CONDITIONING OF COOLING MEDIUMS AT 5 °C AND ONE PACK-OUT FOR ALL SEASONS
- ▶ EFFICIENT: RELOAD EFFECT WHEN THE PALLET SHIPPER IS TEMPORARILY STORED AT 5°C



### XXL PALLET SHIPPER TECHNICAL SPECIFICATIONS

Outer dimensions in mm	1520 × 1120 × 1355
Payload capacity in mm	1240 × 840 × 1000
Payload in l	1041,6
Volume weight in kg	384
Duration in hours	120
Temperature range	2–25°C

QUALIFIED AT TEMPERATURES BETWEEN MIN. -20°C – MAX. 60°C; AVERAGE TEMPERATURE: 25,5°C\*

## THE OPTIMUM SITUATION IS WHEN THE GOODS AND THE DRY ICE ARE SAFELY SEPARATED.

The EPP dry ice shipper is ideal for biotech industries enabling durations of up to 35 hours. Thanks to durable EPP, the Dry-Ice-Shipper can easily withstand impacts during transport, making it perfect for reuse in local and nationwide distribution, conserving resources in the

process. Another benefit is that neither the goods nor the recipient are exposed to the dry ice used as a cooling medium at any time.

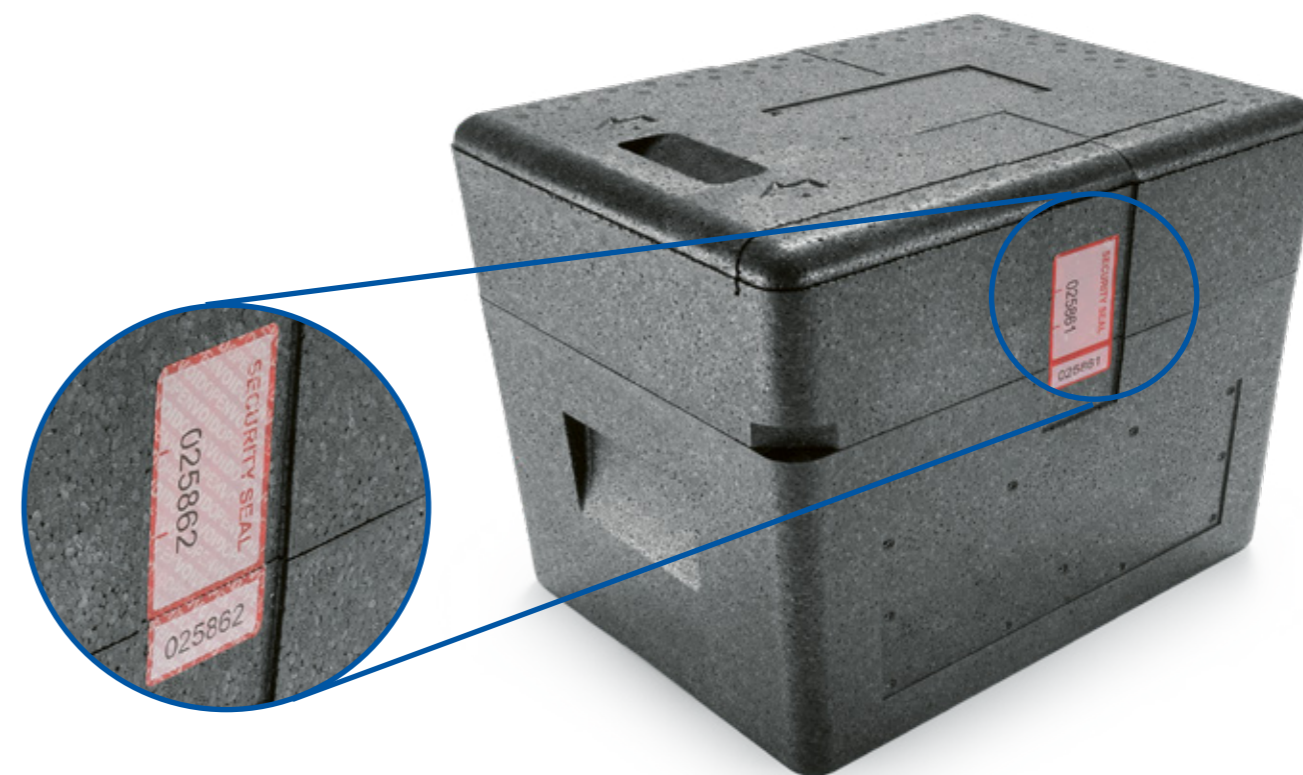
### BENEFITS OF THE DRY ICE SHIPPER

- ▶ SAFE: NO CONTACT OF THE DRY ICE WITH THE PRODUCT OR THE PERSON OPENING THE BOX
- ▶ REUSABLE: THE BOX CAN BE REUSED MULTIPLE TIMES THANKS TO ROBUST EPP
- ▶ QUALIFIED: BASED ON AFNOR NF S99-700

### DRY ICE SHIPPER TECHNICAL SPECIFICATIONS

	<b>SD large</b>
Outer dimensions in mm	590 × 395 × 370
Payload capacity in mm	490 × 300 × 205
Payload in l	30.1
Volume weight in kg	14.4
Duration in hours	35
Temperature range	< -15°C

QUALIFIED AT TEMPERATURES BETWEEN MIN. 22°C – MAX. 40°C; AVERAGE TEMPERATURE: 26°C\*



Made from durable EPP:  
Dry ice shipper with 30 liter capacity

Particularly safe:  
Tamper-proof thanks to a security adhesive





# PS

PREQUALIFIED SYSTEM SOLUTIONS

**PRACTICAL** MEANS  
HAVING THE IDEAL PROTECTIVE  
PACKAGING IN STOCK AND AVAILABLE  
RIGHT AWAY.

# PREQUALIFIED MEANS PLAYING IT SAFE.

Storopack's prequalified system solutions are especially practical for the quick dispatch of medications. Temperature-sensitive products can be shipped safely, quickly, and cost-effectively in temperature ranges from 2 to 8°C or 15 to 25°C with holding durations of 24 or 48 hours. Available in a variety of standard sizes, all of

Storopack's system solutions are in stock and available, and come with all the necessary components – insulated box, cooling medium, shipping carton, inside carton, packaging instructions, and qualification report.

## BENEFITS OF THE SYSTEM SOLUTIONS

- ▶ SIMPLE HANDLING: NO EXTRA LAYERING BETWEEN THE COOLING MEDIUM AND PRODUCT REQUIRED
- ▶ QUALIFIED: FOR EXTREMELY DEMANDING TEMPERATURE PROFILES IN ACCORDANCE WITH AFNOR NF S99-700
- ▶ COMPLETE: SYSTEM SOLUTIONS INCLUDE ALL OF THE COMPONENTS NECESSARY FOR SHIPPING (EPS BOX, COOLING ELEMENTS, SHIPPING AND INSIDER CARTON, PACKAGING INSTRUCTIONS)
- ▶ AVAILABLE FAST: IN STOCK AND READY TO SHIP DIRECTLY



Efficient and prequalified:  
24 h and 48 h system solution

## 24 H SOLUTION / 2-8°C TECHNICAL SPECIFICATIONS

	System box 5 l	System box 10 l	System box 21 l	System box 31 l	System box 37 l
Outer dimensions in mm	413 × 401 × 271	413 × 401 × 345	630 × 415 × 402	632 × 415 × 487	786 × 589 × 392
Payload capacity	275 × 215 × 95	275 × 215 × 170	410 × 275 × 190	410 × 275 × 275	565 × 450 × 145
Payload in l	5	10	21	31	37
Empty weight* in kg	3.8	4	7.4	9.4	12.2

## 24 H SOLUTION / 15-25°C TECHNICAL SPECIFICATIONS

	System box 9 l	System box 22 l	System box 33 l	System box 44 l
Outer dimensions in mm	413 × 401 × 345	630 × 415 × 402	632 × 415 × 487	786 × 589 × 392
Payload capacity in mm	274 × 212 × 164	478 × 276 × 166	478 × 276 × 250	628 × 448 × 156
Payload in l	9	22	33	44
Empty weight* in kg	4.4	8.0	8.4	14.4

24 H SOLUTIONS QUALIFIED BASED ON AFNOR NF S99-700 FOR TEMPERATURES BETWEEN MIN. 22°C – MAX. 30°C;  
AVERAGE TEMPERATURE: 27°C\*

## 48 H SOLUTION / 2-8°C TECHNICAL SPECIFICATIONS

	System box 7 l	System box 18 l	System box 21 l	System box 33 l
Outer dimensions in mm	413 × 401 × 345	630 × 415 × 402	632 × 415 × 487	786 × 589 × 392
Payload capacity in mm	214 × 214 × 148	426 × 236 × 182	411 × 211 × 244	566 × 386 × 152
Payload in l	7	18	21	33
Empty weight* in kg	6.6	10.3	18.8	20.0

## 48 H SOLUTION / 15-25°C TECHNICAL SPECIFICATIONS

	System box 5 l	System box 15 l	System box 25 l	System box 38 l
Outer dimensions in mm	413 × 401 × 345	630 × 415 × 402	632 × 415 × 487	786 × 589 × 392
Payload capacity	274 × 146 × 132	416 × 280 × 134	478 × 216 × 250	633 × 389 × 155
Payload in l	5	15	25	38
Empty weight* in kg	7.1	12.6	13.7	18.4

48 H SOLUTIONS QUALIFIED BASED ON AFNOR NF S99-700 FOR TEMPERATURES BETWEEN MIN. 22°C – MAX. 40°C;  
AVERAGE TEMPERATURE: 26°C\*\*



STANDARD BOXES AND ACCESSORIES

**WELL EQUIPPED** MEANS  
HAVING FIRST-CLASS  
ACCESSORIES, TOO.



## STANDARD BOXES

Storopack's standard boxes are the packaging of choice when a number of different applications need to be covered reliably. Storopack offers thermoboxes made of EPS (styrofoam) and Neopor® for this purpose, to be combined with our cooling elements or with dry ice. Customers can choose from a range of standard boxes with different wall thicknesses.

Our experts can offer professional advice, taking into account all of the factors associated with temperature-controlled transport. This solution is ideal for shipping food, medication, paints and varnishes, and other products requiring cooling.

### BENEFITS OF THE STANDARD BOXES

- ▶ FLEXIBLE: STANDARD BOXES WITH DIFFERENT WALL THICKNESSES, WITH OR WITHOUT SHIPPING CARTON
- ▶ EXPANDABLE: INTERMEDIATE RINGS FOR FLEXIBLE EXPANSION OF THE PACKING SPACE, AND STACKABLE COMPARTMENTS FOR COOLING ELEMENTS OR DRY ICE AVAILABLE
- ▶ VARIABLE: CAN BE USED WITH DIFFERENT COOLING MEDIA



Especially variable:

EPS or Neopor® box with intermediate ring, cooling element or dry ice compartment

## COOLING ELEMENTS

Storopack offers everything you need for temperature-controlled shipment. In addition to prequalified protective packaging and system solutions, our product range also include accessories for our temperature-controlled protective packaging. Cooling media for all

circumstances: our gel packs ensure reliable cooling throughout transit. Alternatively, you can opt for our returnable cooling elements, which can be reused as much as you want: you can choose between H<sub>2</sub>O or PCM cooling elements.

### COOLING ELEMENTS FROM STOROPACK

- ▶ SAFE: RELIABLE COOLING WHEN TRANSPORTING TEMPERATURE-SENSITIVE PRODUCTS
- ▶ FLEXIBLE: DIFFERENT SIZES AVAILABLE
- ▶ VARIABLE: COOLING ELEMENTS FOR RETURNABLE (REUSABLE) OR SINGLE-USE APPLICATIONS AVAILABLE
- ▶ HARMLESS: FOOD-SAFE COOLING ELEMENTS
- ▶ APPLICATION-SPECIFIC: H<sub>2</sub>O OR PCM COOLING ELEMENTS AVAILABLE



STO SERIES		GN SERIES		PL SERIES	
Outer dimensions in mm	Weight in kg	Outer dimensions in mm	Weight in kg	Outer dimensions in mm	Weight in kg
205 × 205 × 26	0.79	176 × 108 × 30	0.43	480 × 280 × 28	2.67
255 × 255 × 26	1.28	265 × 162 × 30	0.99	480 × 280 × 40	3.86
312 × 312 × 26	1.99	325 × 176 × 30	1.28	600 × 400 × 28	5.03
381 × 381 × 26	3.10				



AT SERIES		TCPplus® GEL PACKS	
Outer dimensions in mm	Weight in g	Outer dimensions in mm	Weight in g
165 × 90 × 20	220	150 × 170 × 25	340
210 × 90 × 20	300	150 × 180 × 25	450
		150 × 235 × 25	680
		150 × 270 × 25	900

## SUSTAINABILITY

**SUSTAINABILITY** MEANS  
THINKING ABOUT TOMORROW,  
TODAY.

**REDUCE**  
**REUSE**  
**RECYCLE**  
**RENEW**



Sustainability encompasses many aspects. Whether environmental, economic, or social issues, the underlying principle is the same, i.e., to live in a way that enables future generations to have a life that is just as good as – or even better than – our own. As a family-run company, we take these principles extremely seriously.

New, more sustainable raw materials are a great way to protect the environment and natural resources. Therefore, our product development experts are increasingly using suitable eco-friendly and sustainable materials for our products.

### Styropor® Cycled™

- ▶ PRODUCED USING THE ChemCycling™ METHOD BASED ON PLASTIC WASTE FROM HOUSEHOLD RECYCLING
- ▶ PROTECTIVE PACKAGING MADE FROM Styropor® Cycled™ HAVE THE SAME HIGH QUALITY AS CONVENTIONAL EPS PACKAGING SOLUTIONS
- ▶ MEETS THE STANDARDS FOR FOOD SAFETY
- ▶ CONTRIBUTES TO THE CIRCULAR ECONOMY
- ▶ ecoLoop CERTIFIED



### rEPS

- ▶ MADE FROM 100% RECYCLED EPS OR PR
- ▶ THE PROTECTIVE PACKAGING CAN BE PRODUCED WITH UP TO 100% OF THIS RAW MATERIAL
- ▶ SIMPLE AND EFFICIENT LOOP FOR EPS PROTECTIVE PACKAGING
- ▶ HAS THE SAME PACKAGING PROPERTIES AS CONVENTIONAL EPS

### EXTERNAL INITIATIVES

To boost sustainability in the use of plastics, we are involved in initiatives dedicated to combating plastic waste

such as Alliance to End Plastic Waste, Big Blue Ocean Cleanup, CEFLEX and Operation Clean Sweep.



 **More about sustainability:** [www.storopack.com/sustainability](http://www.storopack.com/sustainability)



If you would like to obtain additional information or speak to us directly,  
please feel free to get in touch with us.  
We at Storopack are happy to help.

**Storopack Deutschland GmbH + Co. KG**

Untere Rietstrasse 30  
72555 Metzingen  
Germany

Africa & Middle East	+49 (0)7123 164-0
Asia-Pacific	+852 3421 2392
Europe	+800 7867 6722
North America	+1 800 827 7225
South America	+55 (0)11 5677 4699

[info@storopack.com](mailto:info@storopack.com)  
[www.storopack.com](http://www.storopack.com)